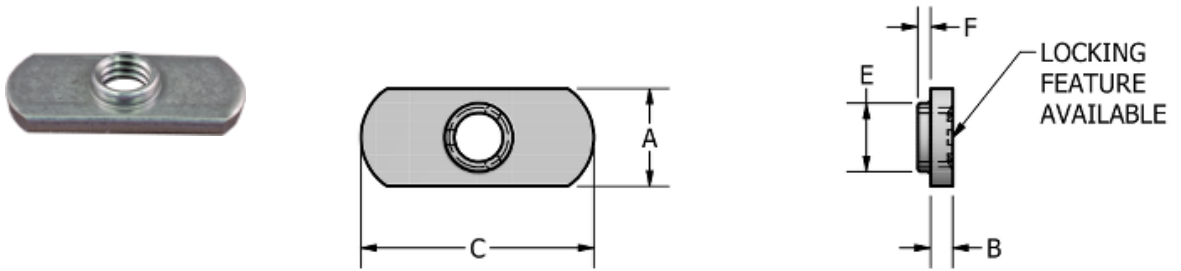


Double Tab Spotweld Nut: NDM 04022



Thread Size	M4 X 0.7-6H
Width (mm)	11.00
Thickness (mm)	2.4
Length (mm)	22.00
A (mm)	11.00
Tol A (mm)	+0.3 / -0.2
B (mm)	2.40
Tol B (mm)	+0.1 / -0.1
C (mm)	22.00
Tol C (mm)	+0.4 / -0.4
E (mm)	5.20
Tol E (mm)	+0.2 / -0.3
F (mm)	0.80
Tol F (mm)	+0.3 / -0.1
Hole In Sheet (mm)	5.6
Material	C1010 High-Welding Quality, Low Carbon Steel
Finish	Plain, Unless Specified
Threads	ASME B 1.13M-2005



DISTRIBUTED BY



advancecomponents.com

972-446-5500